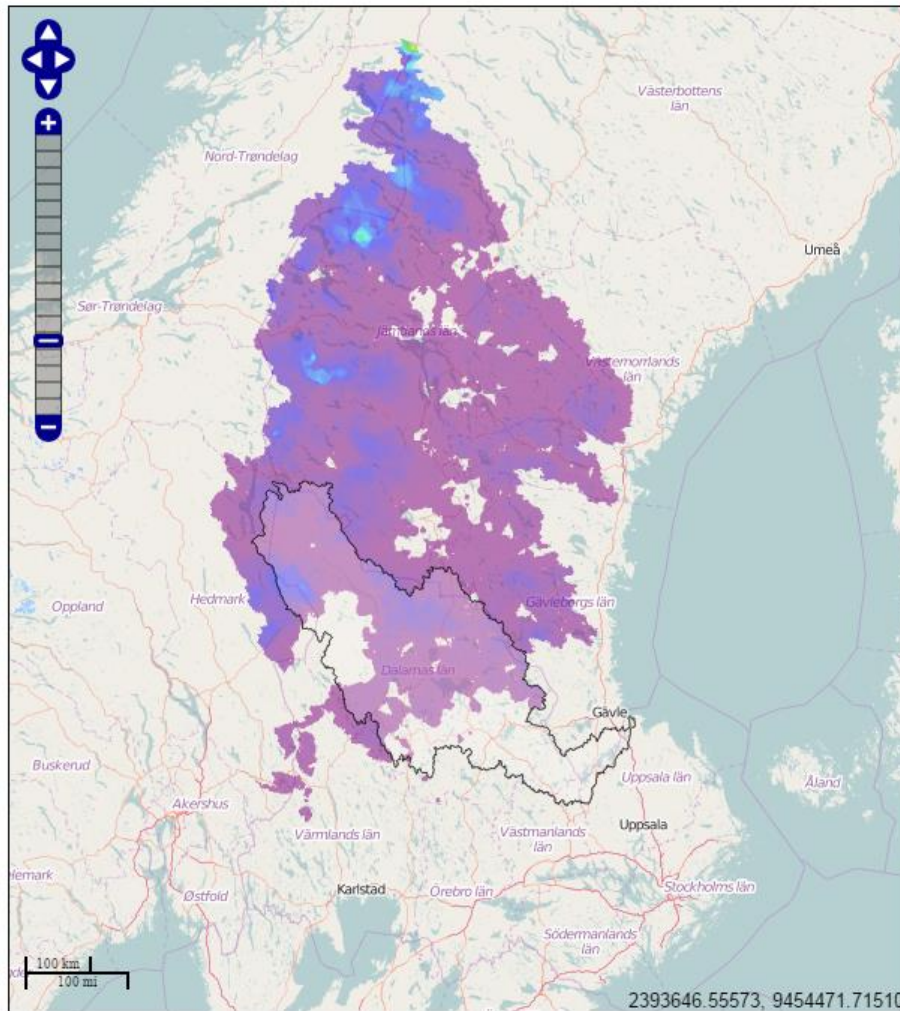


Help to quantify snow status in Fortum production area and for Nordpool as a total.

- **To optimize production and dam safety**
 - **Spring flood duration**
 - **Flooding early winter**

- **HBV validation**

Snow status in Fortum production area



Date slider for hydrological variables:

Tue Nov 17



Select variable:

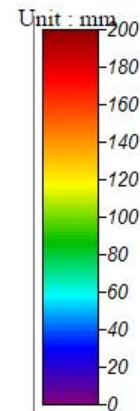
- Runoff
- Snow water equivalent
- Temperature
- Precipitation
- None

Forecast points:

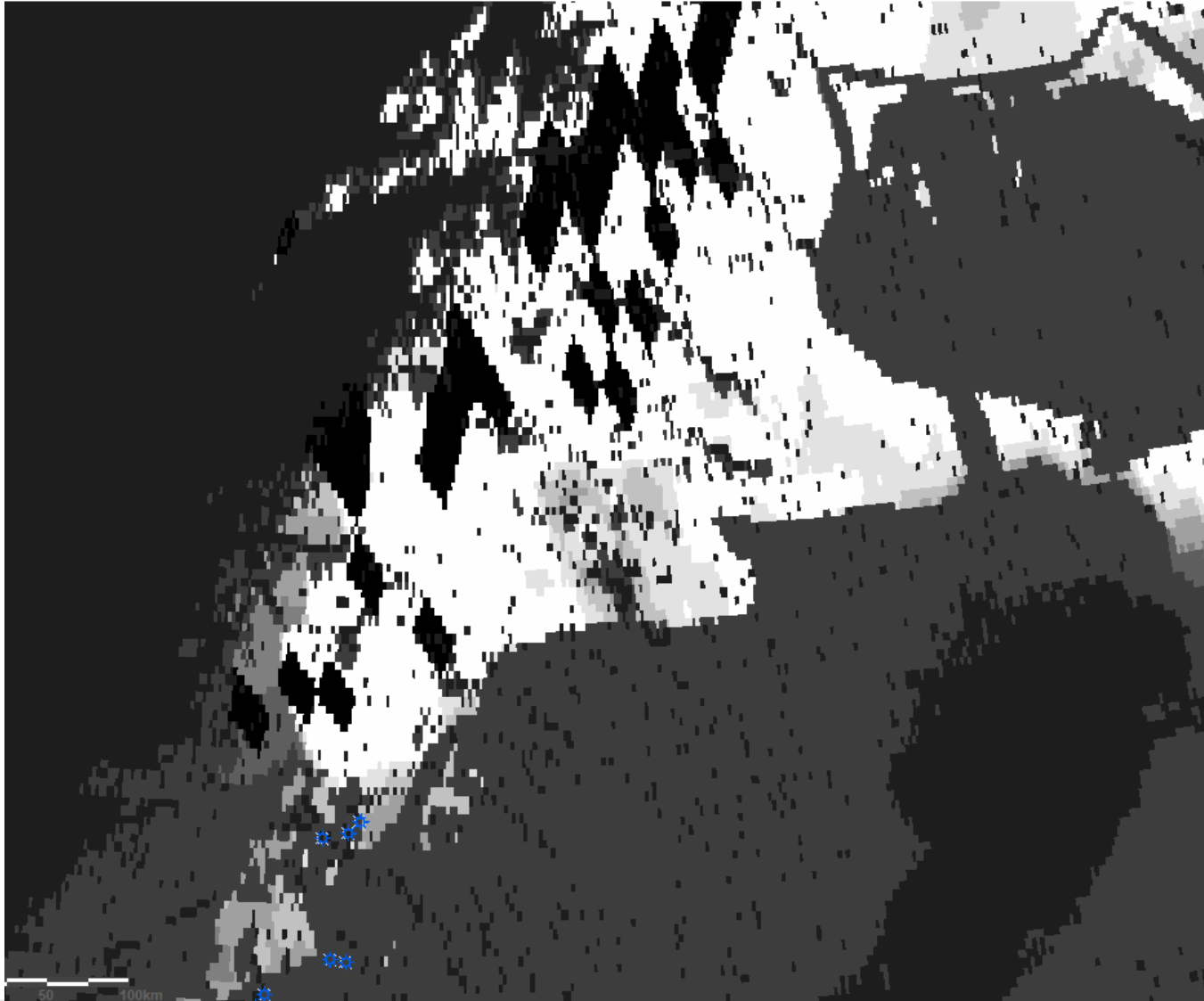
- All
- None

Show watershed borders:

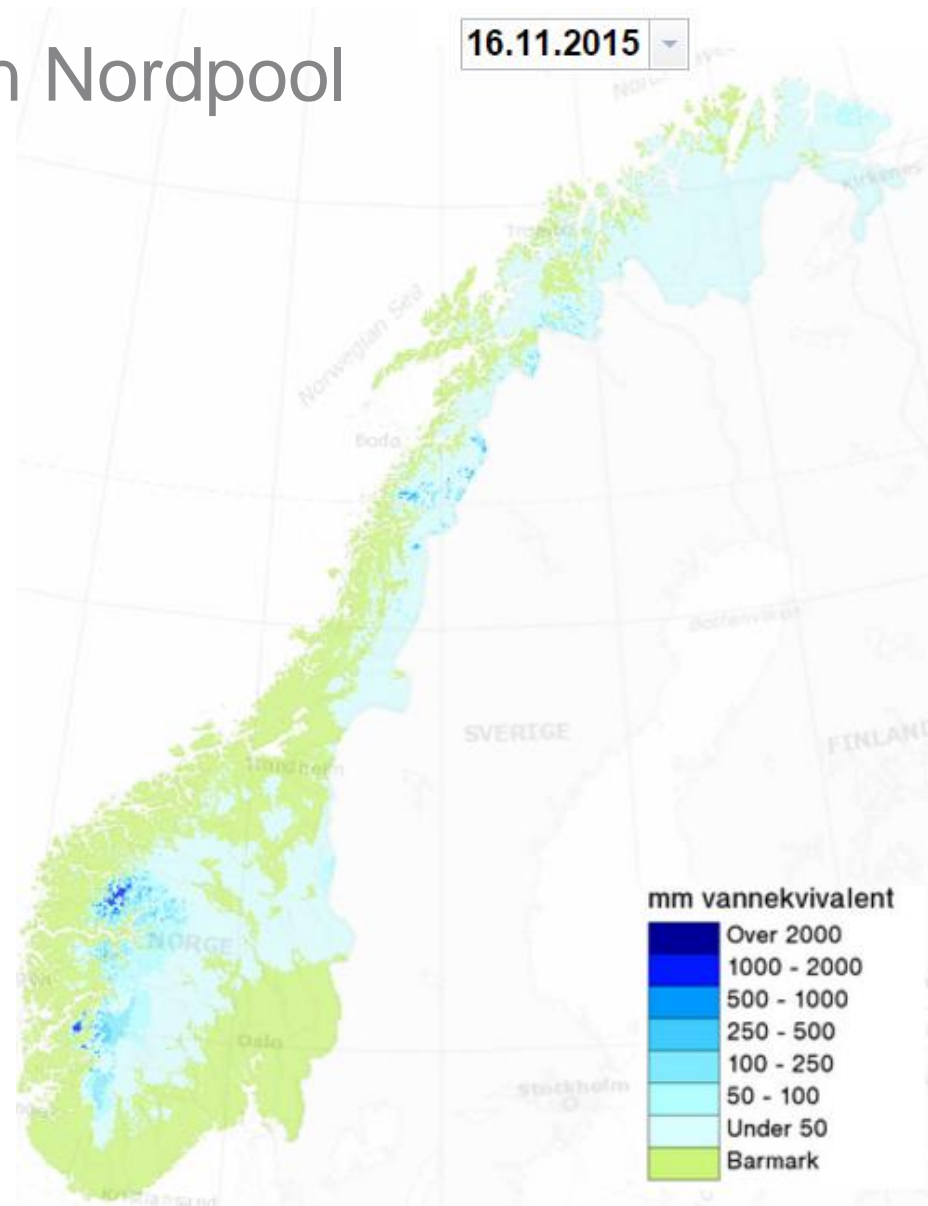
- Byälven 108
- Norsälven 108
- Gullspångälven 108
- Klarälven 108
- Dalälven 53
- Ljusnan 48
- Ljugnan 42
- Indalsälven 40
- Faxälven 38
- None



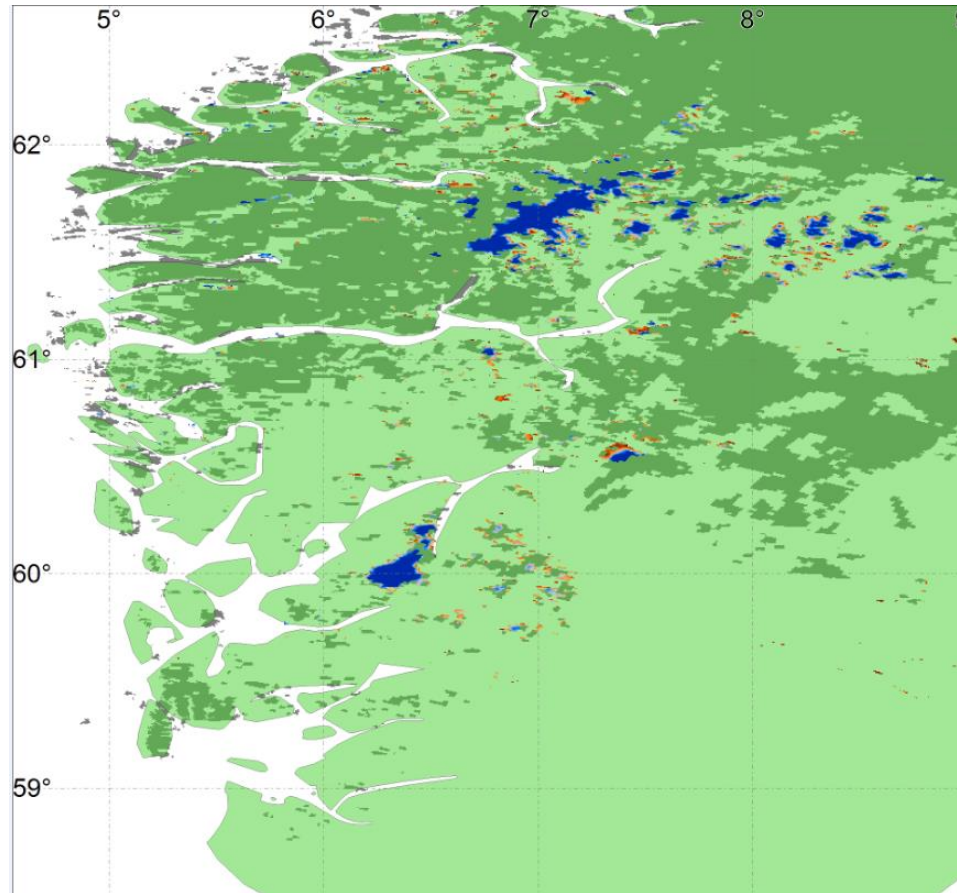
Snow status in Fortum production area



Snow status in Nordpool



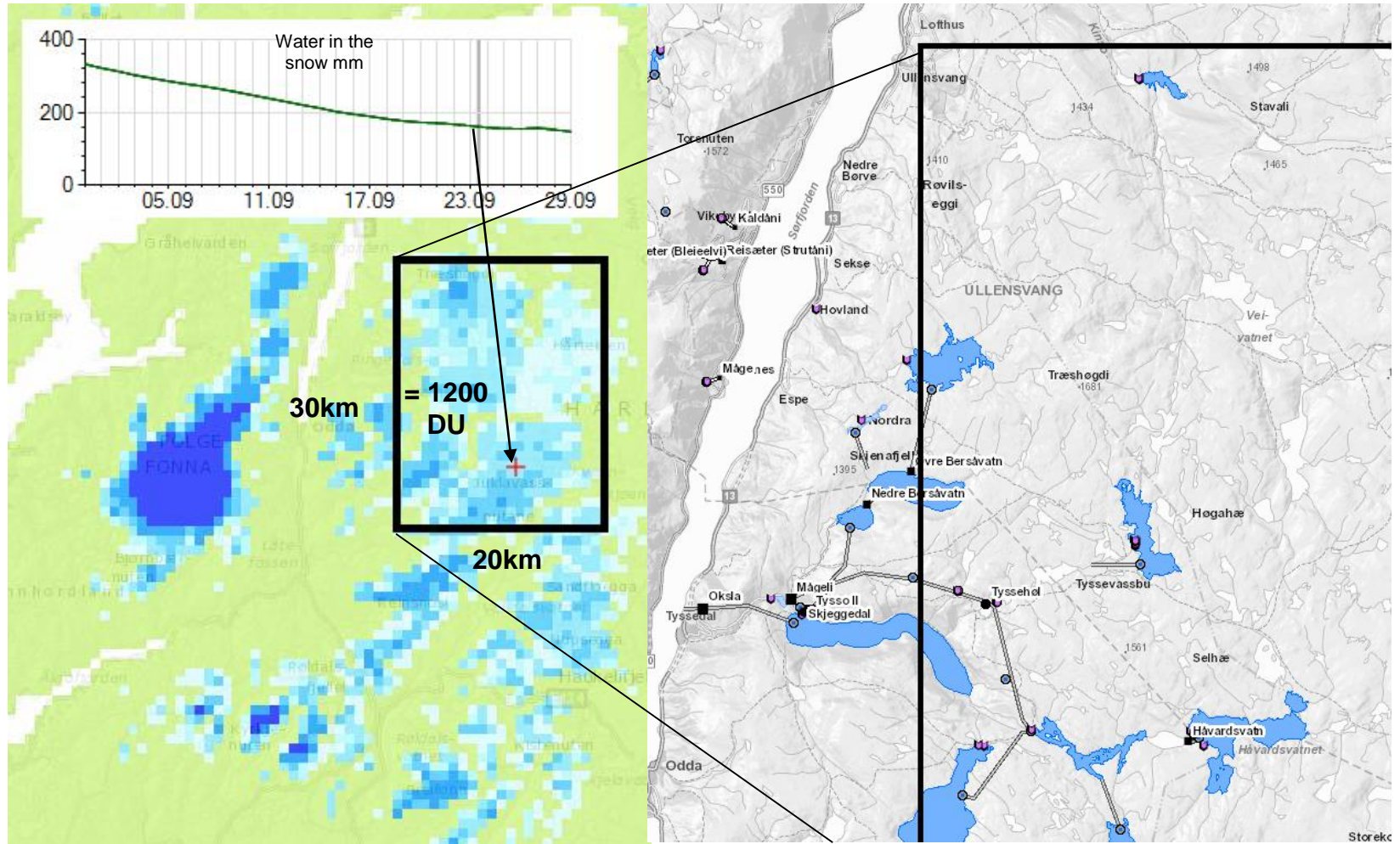
Satellite picture confirms the NVE snow map areal distribution. (Pic. From TEKES project)



Detailed look at the remaining snow

Square represents ~1200 DU

Production units gives 0,32 TWh



- **To get second opinion about SWE**
- **To get an answer regarding snow cover distribution**

- **Whish list**
 - Map with catchment areas**
 - Reliability map**
 - Combined HBV – Satellite map**