

Control With Remote Sensing in Finland

Anders Munck / Agency for Rural Affairs

19.11.2015

Agency for Rural Affairs (Mavi)

- Mavi is responsible for the use of funds of the European Agricultural Guarantee Fund and the European Agricultural Fund for Rural Development in Finland.
- Acts as the paying agency in Finland administering the payment of appr. 2,5 billion €.
- Administers IT-systems for farmers aid applications and develops e-services
- Agency founded in spring 2007 in Helsinki, headquarters in Seinäjoki.

Mavi data

IACS

- Integrated Administration and Control System
- Farmers aid applications

LPIS

- Main subsystem of IACS
- Identification system for agricultural parcels (GIS)

REFERENCE PARCEL

- Area measurement → base for area based subsidies (€1.8 B)

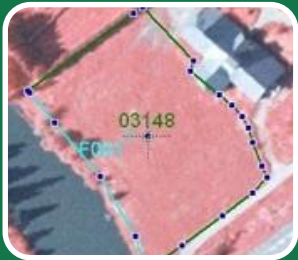
CROSS CHECK

- Controls required

Finnish LPIS - Facts



50 000 farms



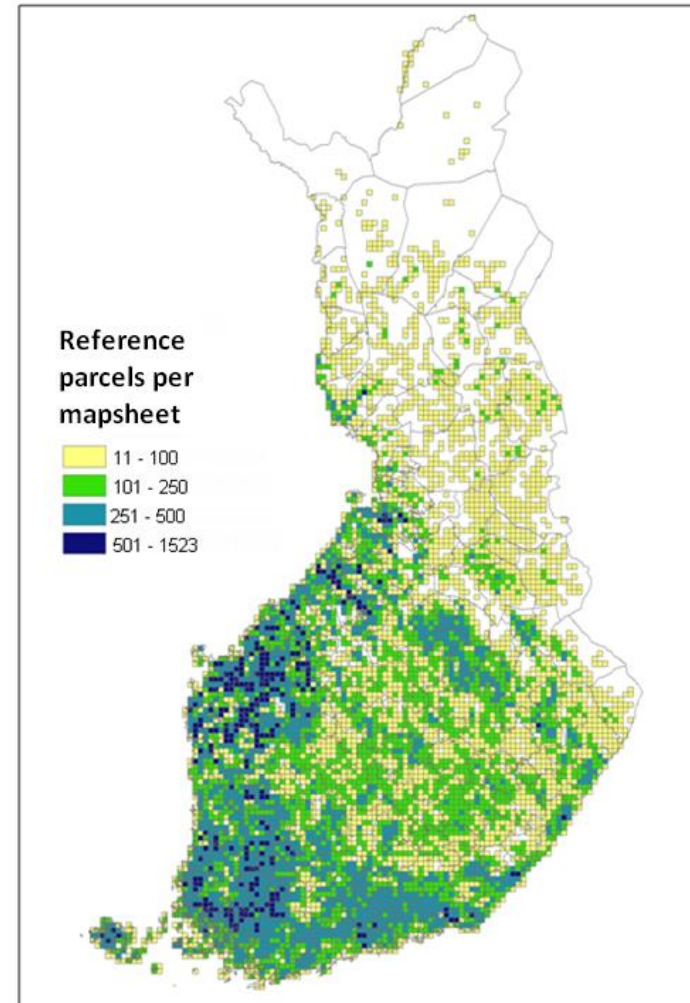
1 M reference parcels

- Farmers block
- 2.3 M hectares

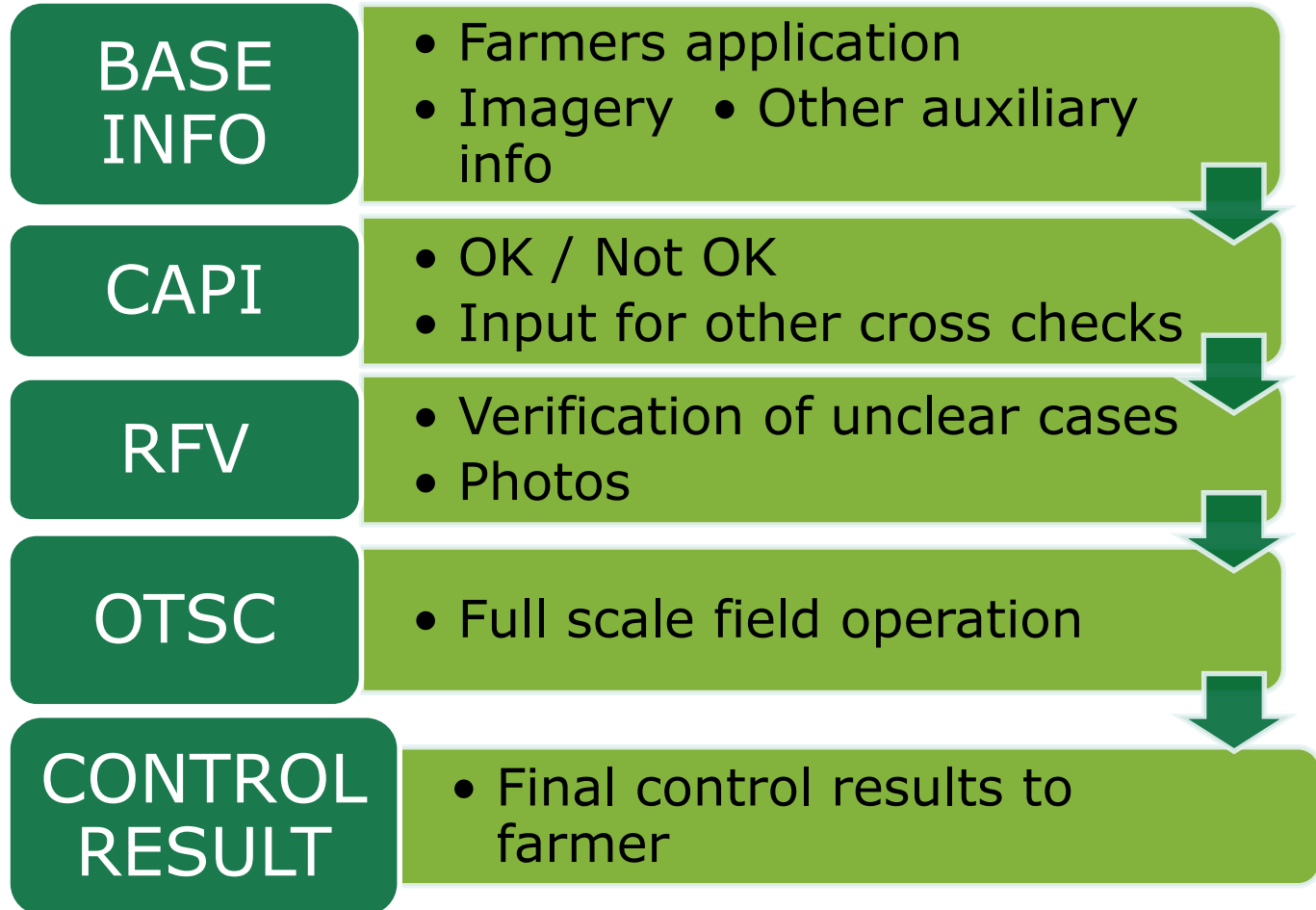


Aerial orthoimagery (CIR)

- 0.5 m pixel size
- 60 000 images



CWRS – Proposed process I



CWRS – CAPI

0 RP boundaries (LPIS update)



1 Agri-cultural parcels



2 Crop species



3 Greening / cross compliance



4 Winter time vegetation cover

Pilot projects

2013

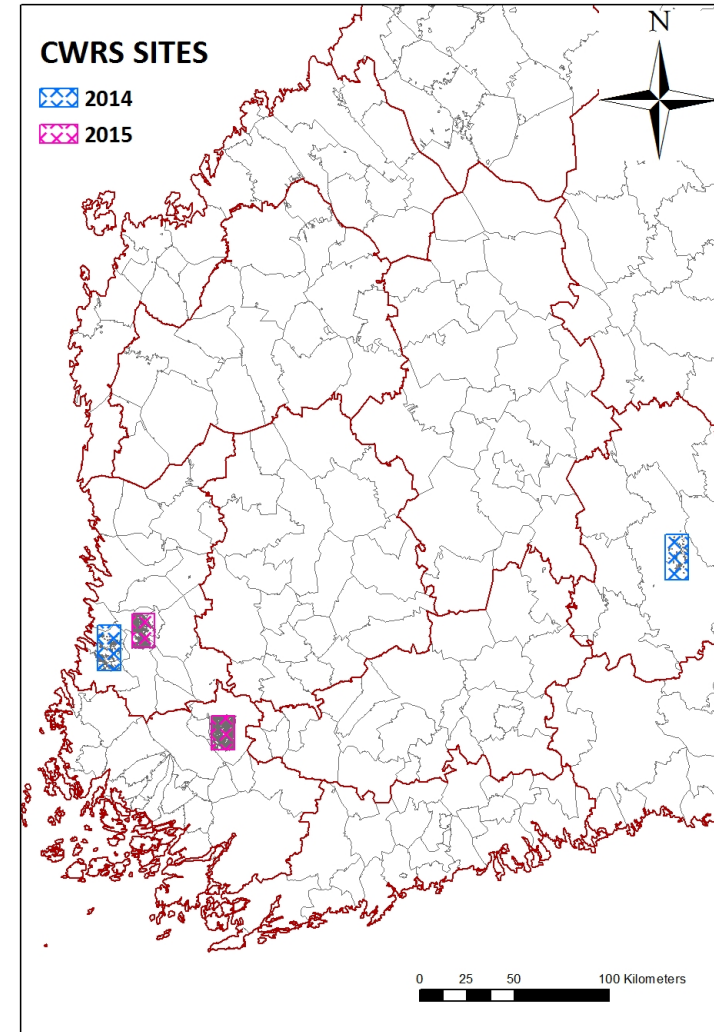
- One site
- 20 farms

2014

- Two sites (12x24 km)
- 100 farms (50 + 50)

2015

- Two sites (12x24 km)
- 100 farms (40 + 60)



CwRS – imagery I

AERIAL



VHR (WV2)



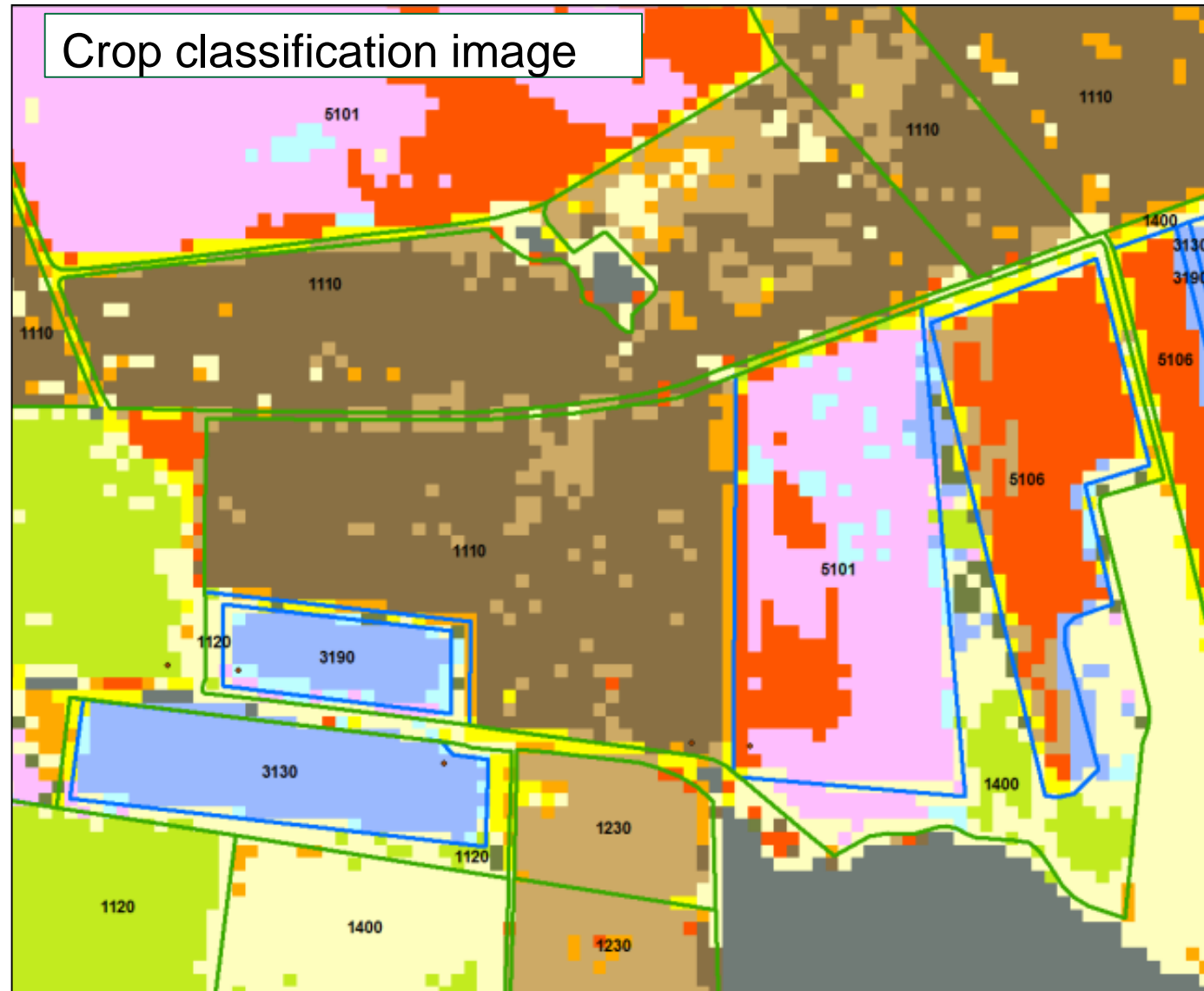
HR+1 (SPOT6/7)



HR+2 (SPOT6/7)



Crop classification image



NAKKI2015_class	
0	
1 110	- WINTER WHEAT
1 120	- SPRING WHEAT
1 230	- WINTER RYE
1 300	- BARLEY
1 400	- PEAS
2 000	- LEGUMINOUS
2 200	- BROAD BEAN (<i>Vicia faba</i>)
3 100	- POTATO
3 200	- SUGAR BEET
4 200	- OILSEED / TURNIP RAPE
6 940	- GRASS COVER

Success

IMAGERY

- Basic processing
- Crop classification image (+/-)

AGRICULTURAL PARCEL

- Delineation
- Crop classification

TIME & QUALITY

- Controller time saved
- Centralised work

FARMER

- Less time required from the farmer

Challenges

IMAGERY

- Acquisition windows
- Processing

FEATURES

- Interpretation of complex or combined features

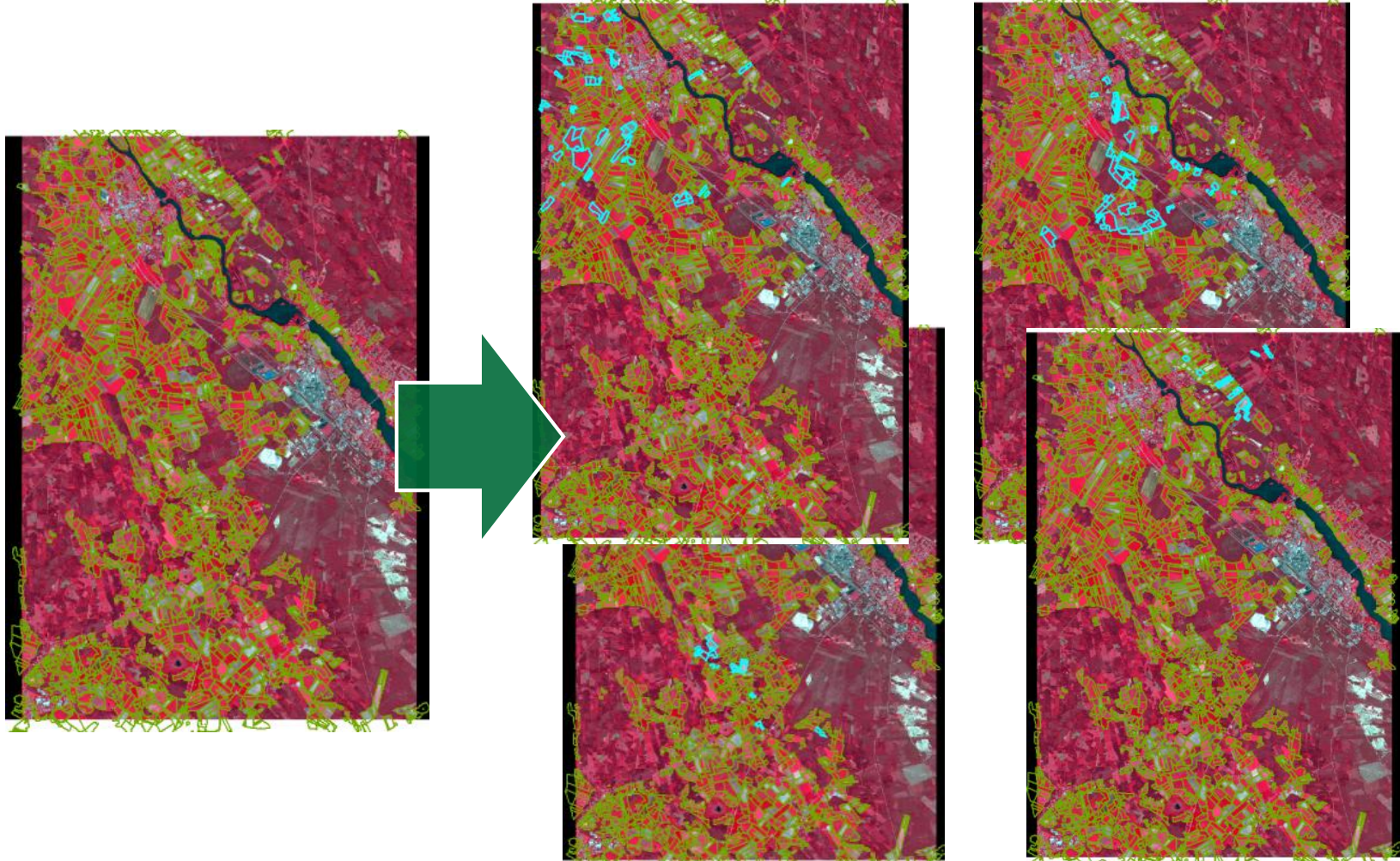
APPLICANTS

- Farm structure
- Application data quality

PROCESS

- Timetable

CWRS – Farm structure



What have we learnt?

Imagery is key – in all aspects

Timetable is crucial – in all stages

Focus – the features are there

e-Controls – 100 %

Process, process, process

What do we need?

IMAGERY

- Multiple /flow of ready-to-use products
- Quality

TIMETABLE

- Quick & reliable delivery

PROCESS

- Data transition / migration
- e-Process



The ideal data delivery case...?

FMI

Mavi

EO data capture

Notification

Processing

End user product

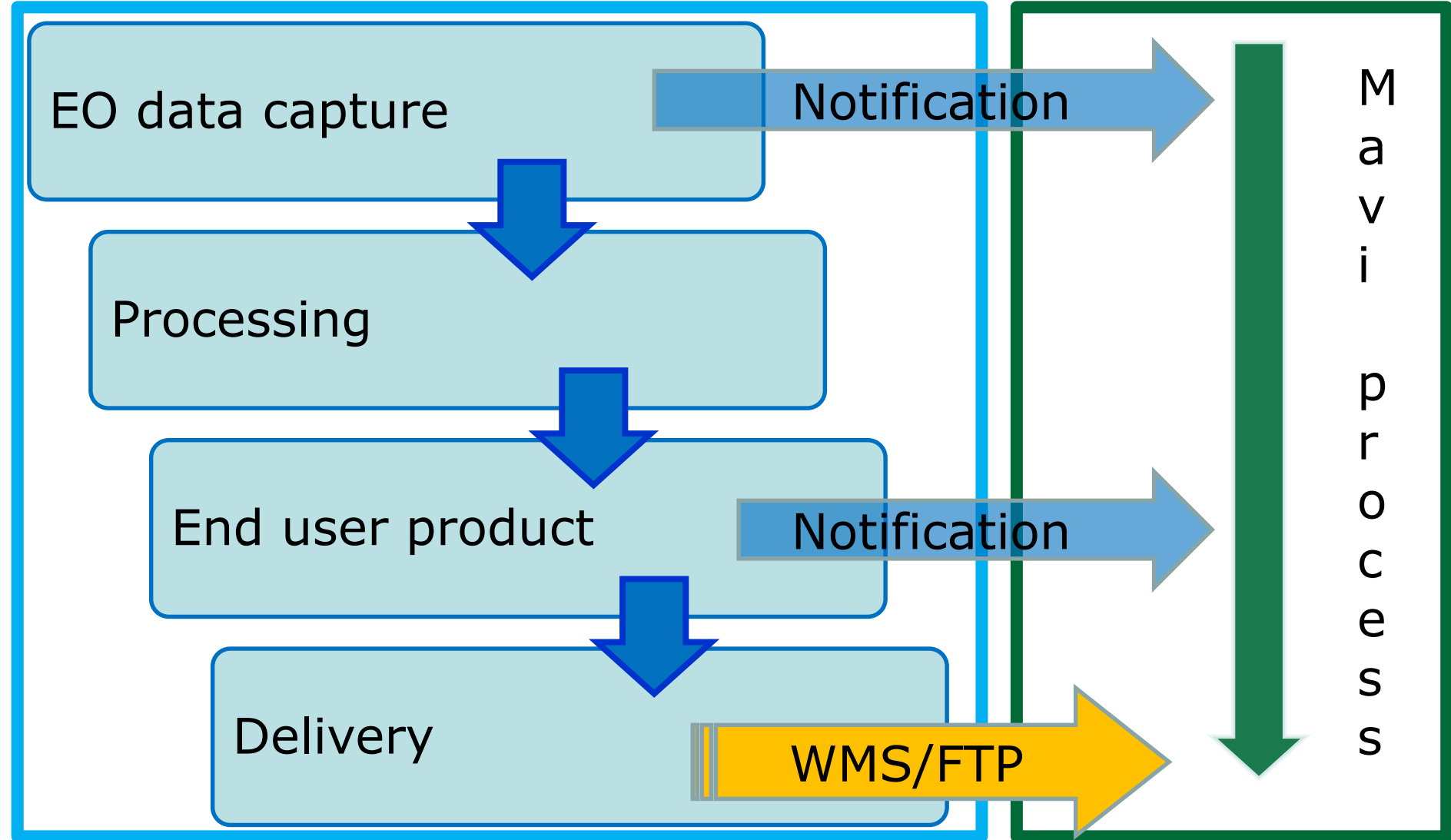
Notification

Delivery

WMS/FTP

M
a
v
i

p
r
o
c
e
s
s



What 's next...?

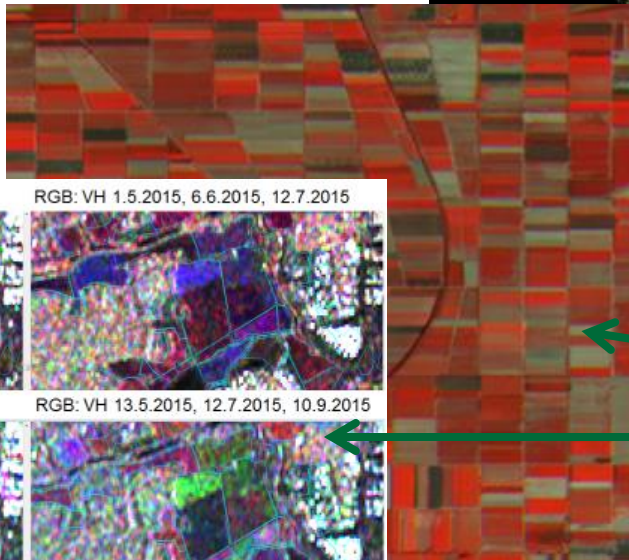
Segmentation



LS8 NDVI

R: March MAX NDVI
G: April & May
MAX NDVI
B: June & July
MAX NDVI

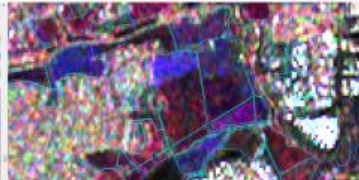
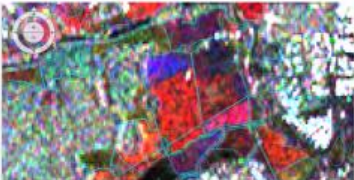
Sentinel-2



Sentinel-1

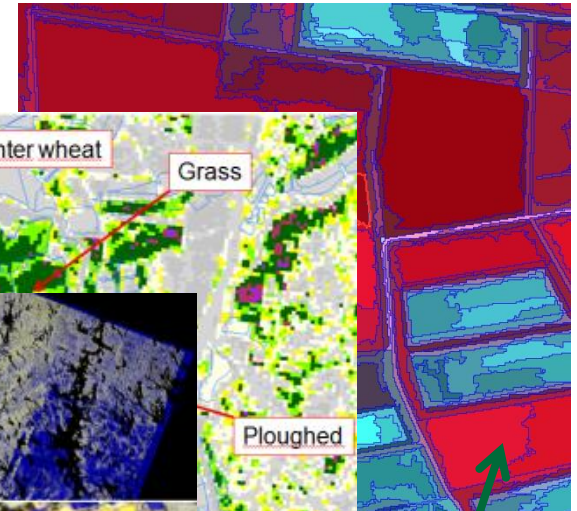
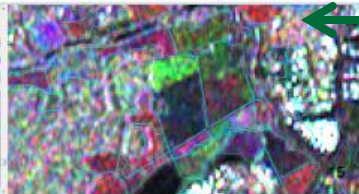
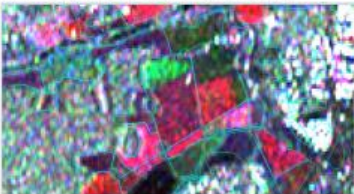
RGB: VV 1.5.2015, 6.6.2015, 12.7.2015

RGB: VH 1.5.2015, 6.6.2015, 12.7.2015



RGB: VV 13.5.2015, 12.7.2015, 10.9.2015

RGB: VH 13.5.2015, 12.7.2015, 10.9.2015



ALL
TOGETHER
?

Thank You!

Anders Munck
anders.munck@mavi.fi